



Brochure

# Enhancing safety for transportation and logistics

The pressures on transportation and logistics providers have increased exponentially over the past decade. From the airport to the runway, railway, highway, dock and beyond your customers expect you to meet deadlines safely and efficiently. The continued growth of e-commerce requires faster lead times, expanded products and services and tailored experiences.

Staying connected is essential to meeting these demands and protecting your mobile workforce. Your company's technology must be built to thrive and safeguard your operations in today's environment and beyond.



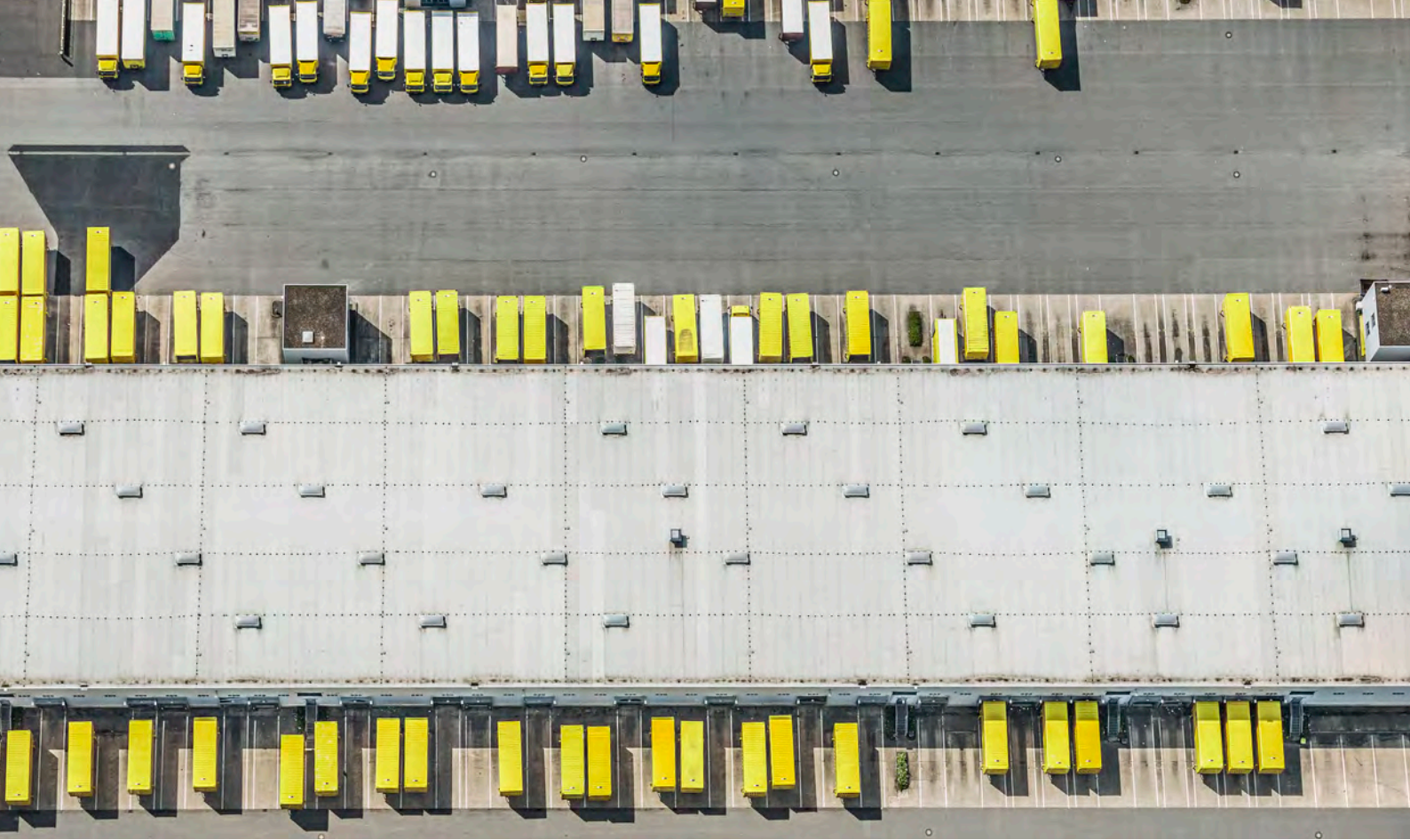
# Help your fleets work better and faster, together

From the airport to the runway, railway, highway, dock and beyond

Adequately prepare your staff for challenges by connecting your critical communications, video security, access control, data and analytics with the Motorola Solutions safety and security ecosystem.

| IF YOU NEED HELP WITH           | OUR ECOSYSTEM PROVIDES  |
|---------------------------------|---|
| Fleet maintenance               | Integrations that drive real-time updates of vehicle locations and activities   |
| On-time and accurate deliveries | Real-time visibility and tracking of drivers and shipments  |
| Always-available communication  | Seamless roaming and nationwide push-to-talk capabilities, connecting your vehicles and sites   |
| Staff safety                    | Federally compliant, hands-free communication with integrated GPS location tracking and automated emergency workflows   |
| Perimeter security              | Unified communications and integrated technology that spans your entire estate, ensuring the grounds are secure and monitored for potential emergencies and incidents |





# Discover the technology that helps your organisation tackle each challenge and turn it into a positive outcome

## Staff Safety

- Number plate recognition to alert of unwanted individuals entering company premises
- Two-way radios allow employees to have a quicker response time in emergency situations
- Mass notifications via text, email and voice to notify the right people with the right information at the right time
- Appearance search via video analytics can automatically alert security staff

## Streamlined production and distribution

- Two-way radios for rapid, reliable communications that work with fixed video and access control for alerting, full building coverage and seamless situational awareness
- Work Order ticket management to track cycle time and reduce downtime
- Voice dispatch to control your mobile workforce from a central location
- Integration of data applications on push-to-talk devices to avoid device proliferation

## Situational intelligence

- Incident management software for proven incident and records management to enhance response and reduce risk
- CommandCentral Aware to remotely assist security and public safety officers when they reach the site to locate, track and map incidents
- Access control to unlock specific doors and entry points when authorities arrive on the scene

## Reliable and efficient alerting

- Mass notifications to instantly notify customers and community members of incidents, important announcements, or other relevant information
- Flexibility to respond quickly and notify customers to the uncertainties of extreme weather and natural disasters
- Ability to notify through voice, text, or email



# Key ecosystem components we recommend for safer transportation and logistics



## Avigilon video security & access control

Strengthen safety and quality control with integrated building video security and access control systems built to secure vulnerable areas and provide frictionless access.

- Complete situational awareness
- Cloud versatility
- Driven by AI
- Manage from anywhere



## Wave PTX Carrier Independent Broadband PTT

Connect your team with greater speed and efficiency with a push to talk over cellular service without boundaries. With heavy-duty traditional and lightweight, wearable communications options that work together, your employees can have a device to meet their needs.

- Instant PTT communication
- Multimedia messaging
- Nationwide service



## Avtec Scout Dispatch Console

Reliable dispatch starts with easy-to-use and customisable communications. Avtec Scout keeps your teams connected while on the road or in the warehouse, with the ease of integration amongst varying communication tools.

- Integrate with legacy and next-generation radio, telephony, broadband/LTE
- Highly customisable graphical user interface
- System redundancy for 24/7/365 availability



## MOTOTRBO Radios

Communications to instantly and reliably connect your mobile workforce – so you and your team are always aware. Ensure your team can hear and be heard, loud and clear, no matter where they are.

- Durable and easy to use
- Pristine audio quality
- Long battery life
- Full multimedia and app capabilities





# Take your transportation and logistics operations **to the next level**

It's time to rethink what safety can do – driving efficiencies, bolstering performance and helping you deliver a secure and safe environment for staff - on the road or on-site. By bringing together the technologies and solutions you need to detect, analyse, communicate and manage, Motorola Solutions' fully integrated technology ecosystem is helping you prioritise employee safety, while maintaining highly efficient operations.

Learn how Motorola Solutions can help your logistics operations elevate safety with communication solutions that go the distance at [motorolasolutions.com/transportation](https://motorolasolutions.com/transportation)



Automate with Orchestrate

MOTOROLA, MOTO, MOTOROLA SOLUTIONS and the Stylized M Logo are trademarks or registered trademarks of Motorola Trademark Holdings, LLC and are used under license. All other trademarks are the property of their respective owners. © 2025 Motorola Solutions, Inc. All rights reserved. (02-25)