

Ericsson Cradlepoint W2255

5G adapter for resilient Wireless WAN connectivity



Keep distributed operations connected through changing network conditions

Exceptional wireless experience with the Ericsson Cradlepoint W2255 adapter

The W2255 is a 5G SA adapter offering best of breed capabilities for highly reliable connections when resiliency is a requirement.

No need to choose indoor or outdoor hardware upfront. The W2255's rugged design supports both deployments, simplifying logistics, with internal antennas for indoor use and SMA ports for customer — provided external antennas.

Centralized visibility across Wireless WAN environments

Designed to elevate cellular performance, Ericsson NetCloud gives organizations the visibility, management, and troubleshooting tools needed to deploy and operate Wireless WAN networks with confidence. With a view of cellular health, LEO satellite telemetry, carrier SIM profiles, applications, security events, and connected cell towers, IT teams can efficiently manage the full lifecycle of their Wireless WAN.

Key benefits



Keep critical traffic on the best path

Dual SIM/Dual Standby (DSDS) enables rapid switching between carrier networks to maintain continuity for critical applications.



Simplified multi-WAN visibility

NetCloud integrates cellular and satellite traffic visibility for easier multi-WAN management.



Prioritize critical applications

URSP-enabled 5G SA slicing supports prioritized network traffic and application performance.



Auto-select the best carrier

eSIM and Carrier Selection Intelligence help identify the best carrier per deployment location.



Indoor or outdoor deployment flexibility

IP67-rated design supports harsh environmental conditions and flexible installation options.



Secure remote troubleshooting

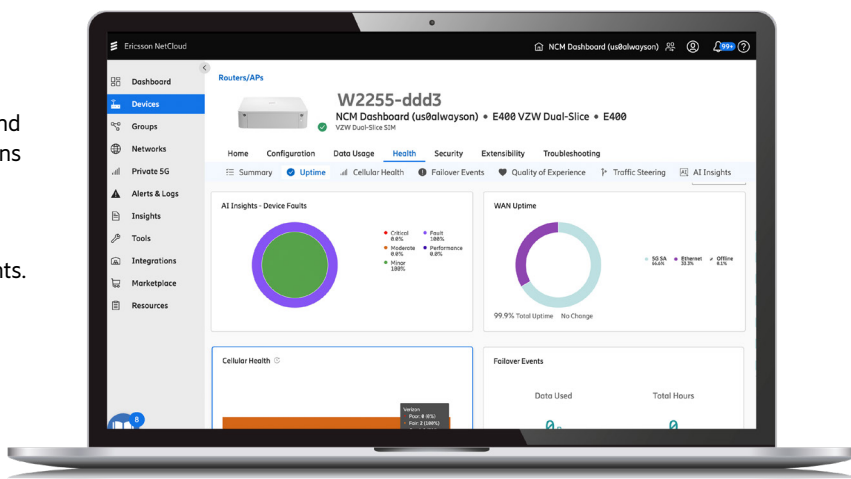
Out-of-band management enables secure troubleshooting without disrupting firewall settings.

Secure, cloud-based management delivers efficiency and uptime

Ericsson NetCloud provides centralized visibility and management across Wireless WAN environments

NetCloud enables organizations to efficiently manage Wireless WAN environments with zero-touch deployment, group configuration, lifecycle management, and Out-of-Band troubleshooting tools designed to support resilient operations at scale.

Exceptional visibility into cellular health conditions helps IT teams optimize performance across distributed environments.



Resiliency is now a board-level priority

Network resiliency has become a board-level priority as AI-driven operations have reliance on network connectivity. According to an IT Pro survey in March:

8 out of 10

of organizations have experienced outages that were not resolved immediately

62%

of leaders believe data outages pose a bigger threat to their businesses than a recession

Link diversity and carrier diversity are commonly used tools to ensure network resiliency, yet many major networking vendors lack visibility into the unique conditions of wireless WAN.

Building network resiliency with Wireless WAN

NetCloud enhances network resiliency by enabling scalable Wireless WAN visibility, management, and orchestration of cellular and LEO satellite traffic to simplify operations, extend connectivity options, while reducing complexity and costs.

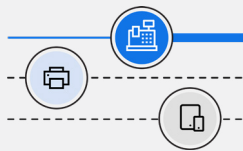
Operational continuity scenarios enabled by Wireless WAN

Maintain connectivity during outages



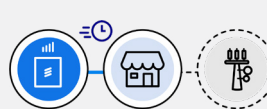
Cellular and satellite connectivity help maintain resilient operations across remote and distributed environments, even during wired or carrier disruptions.

Scale bandwidth when needed



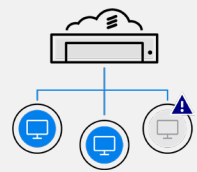
Leverage supplemental wireless capacity to accommodate traffic spikes and reduce brownout scenarios during peak demand periods.

Bring sites online faster



Wireless WAN connectivity accelerates site deployment timelines by reducing dependence on wired infrastructure availability.

Reduce onsite IT visits



Remote troubleshooting and out-of-band management help IT teams resolve issues faster while minimizing operational disruption.

Learn more about the Ericsson Cradlepoint W2255